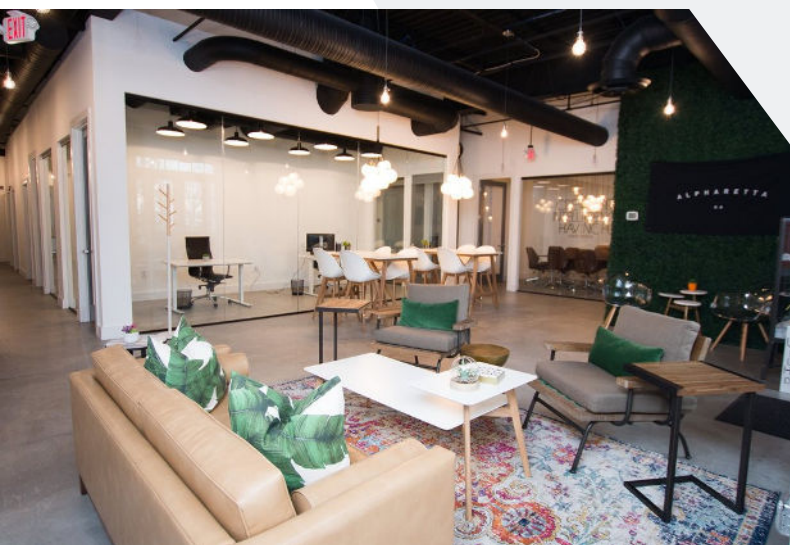
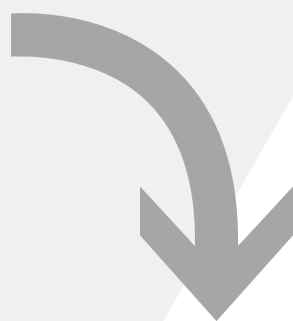


# VALUE COMPARISON



VS



## THRIVE COWORKING

### WHAT YOU GET:

#### Scenario:

- Thousands of SQFT of Dedicated + Shared Space @ THRIVE, including outdoor workspace, fully stocked cafe areas, teched-out meeting spaces and more ...



### UPFRONT COST

\$0

### MONTHLY COST

Membership Fee Est:  
\$2,490

### THE PERKS



Member Events

Snacks

Coffee

Fruit

Wifi

Network



## TRADITIONAL OFFICE

### WHAT YOU GET:

#### Scenario:

- Multiple Offices + Meeting Space

#### Square Footage:

- 3,000 SQFT

### UPFRONT COST

Furniture, Tech, Decor  
\$60,000 - \$85,000

### MONTHLY COST

• Rent	\$8,750
• Utilities	\$450
• Internet	\$500
• Cleaning	\$500
• Upkeep	\$250
• Snacks	\$200
• Insurance	\$70
• Employee Events	\$300

Total Fees:  
\$3,285

## WHY CHOOSE THRIVE

1

Work connected,  
not alone

Work in a community of professionals and entrepreneurs who are making exciting things happen every day.

2

Your most inspired work  
is done in inspiring places

Work in stylish, design-forward and collaborative workspaces that drive creativity and a sense of purpose 24/7/365.

3

You should love where  
you work

Work in a vibrant, walkable neighborhood and enjoy member discounts on dining and services from local retailers.

4

There is an easier way to  
grow your business

Stay competitive with scalable space and a curated culture, including events, outings, and charitable giving via our nonprofit THRIVE | Initiative.